

HS-F3000A-TAB SERIES

Plate Materials: POM-DP,POM-LF
Pin Material: Cold rolled austenitic stainless steel



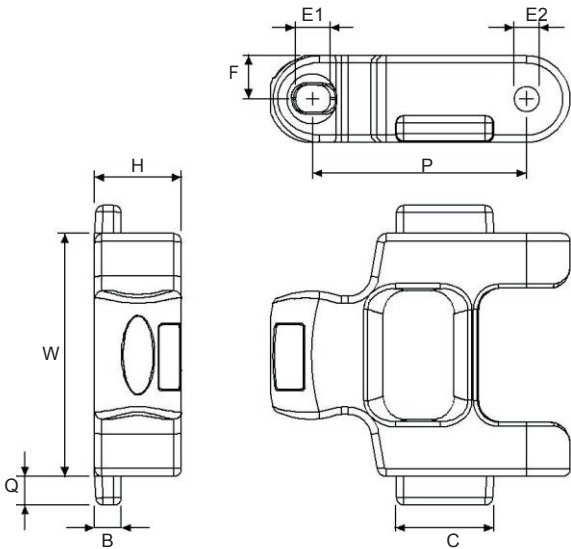
Materials



Sprockets



Applications



Dimension	mm	inches
P	50.6	1.992
F	10.2	0.401
W	57.4	2.260
H	20.5	0.807
Q	6.7	0.263
B	6.3	0.248
C	23.2	0.913
E1	8.3	0.327
E2	6.0	0.236

HS-F3000 (Side Flexing Knuckle Chain)

CHARACTERISTICS									
	Width W		Working Load		Radius		Reverse Radius		Weight
	(mm)	(inch)	kg(21℃)	lb(21℃)	(mm)	(inch)	(mm)	(inch)	
HS-F3000A-TAB	57.4	2.26	317	700	406	16	-	-	1.36