

HS-F3000A SERIES

Plate Materials: POM-DP,POM-LF  
Pin Material: Cold rolled austenitic stainless steel



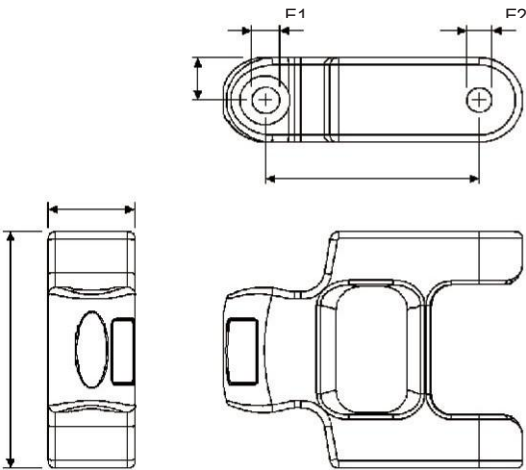
Materials



Sprockets



Applications



Dimension	mm	inches
P	50.4	1.984
F	10.2	0.401
W	57.4	2.260
H	20.5	0.807
E1	6.5	0.256
E2	6.0	0.236

HS-F3000 (Straight Running Knuckle Chain)

CHARACTERISTICS									
	Width W		Working Load		Radius		Reverse Radius		Weight
	(mm)	(inch)	kg(21℃)	lb(21℃)	(mm)	(inch)	(mm)	(inch)	
HS-F3000A	57.4	2.26	317	700	-	-	-	-	1.3 2