

HS-982TAB SERIES

Plate Materials: SS

Pin Material: Cold rolled austenitic stainless steel



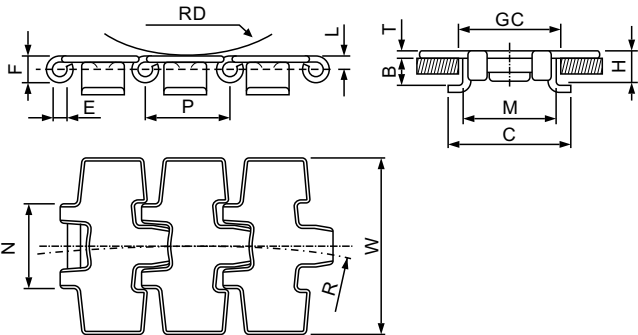
Materials



Sprockets



Applications



Dimension	mm	inches
P	38.1	1.500
T	3.0	0.118
M	43.0	1.693
N	38.3	1.508
C	56.0	2.205
L	6.4	0.252
H	19.3	0.760
E	6.4	0.250
B	12.8	0.504
F	13.0	0.512
RD	75.0	2.953
GC(Straight)	46.0	1.811
GC(Curve)	44.5	1.752

HS-982TAB (Sideflexing-Tab-Reduced Sideflexing Radius)

	Width W		Working Load		Sideflexing Radius		Weight
	(mm)	(inch)	N(21℃)	lbs(21℃)	(mm)	(inch)	
HS-SS 982TAB K3 1/4	82.6	3.25	5000	1125	200	7.87	3.00