

HS-963 SERIES



Materials



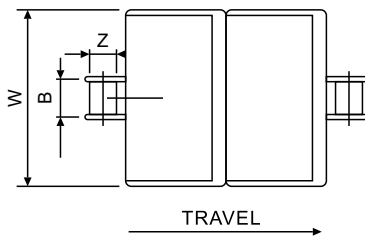
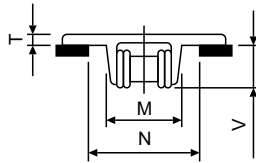
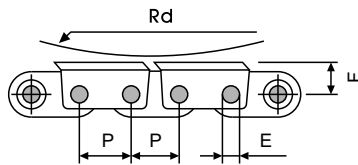
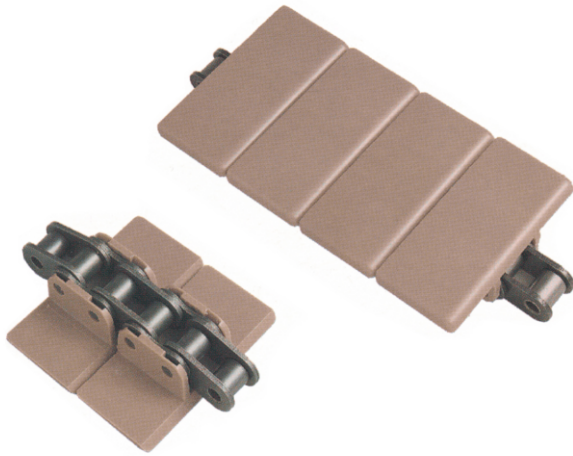
Sprockets



Applications

Plate Materials: POM-DP, POM-LF

Base Chain Material: Carbon steel, Stainless steel



Dimension	mm	inches
P	19.1	0.750
W	—	—
E	5.1	0.200
T	4.0	0.157
F	14.3	0.563
N	36.5	1.434
M	34.1	1.343
Z	11.9	0.469
B	12.6	0.496
V	19.0	0.748
RD	153.0	6.024

HS-963 (Straight Running Plastic Chain)

CHARACTERISTICS

	Width W (mm)	(inch)	Working Load N(21℃)	lbs(21℃)	Radius (mm)	(inch)	Reverse Radius (mm)	(inch)	Weight (kg/m)
HS-963-K325	82.5	3.25	4500	1014	—	—	153	6.0	2.10
HS-963-K450	114.3	4.50	4500	1014	—	—	153	6.0	2.23
HS-963-K600	152.4	6.00	4500	1014	—	—	153	6.0	2.53
HS-963-K750	190.5	7.50	4500	1014	—	—	153	6.0	2.68

*The above tensile force is for Carbon steel, Please consult our engineer for that of Stainless steel.